

10-5-4

NET WT 4 lb
1.8 kg

Lilly Miller

Rhododendron Evergreen & Azalea FOOD

Rhododendrons, azaleas, camellias, and evergreen shrubs need a special combination of plant foods to bloom and grow their best, one that encourages the acid soils they love. It's easy to give them what they need, with Lilly Miller RHODODENDRON EVERGREEN & AZALEA FOOD.

Lilly Miller blends natural ingredients with traditional plant foods to produce a unique fertilizer that provides nitrogen from four different sources. We've added a mix of nutrients that are available to the plants quickly to help get them off to a great start. We've added others that last longer to keep on feeding your shrubs steadily for up to six weeks. Rhododendron Evergreen & Azalea Food also adds extra minerals, so plants are never hungry for these essential elements. For rhododendrons, azaleas, camellias, and other spring-flowering shrubs put Rhododendron Evergreen & Azalea Food on in early spring (February – March). Feed again in early summer after flowers have fallen off.

For evergreen shrubs, such as holly, junipers, and pines, put Rhododendron Evergreen & Azalea Food on after the first blossoms appear. Feed again in early or mid-summer.

Use Rhododendron Evergreen & Azalea Food when planting, too.

HOW DO I USE THIS PRODUCT?

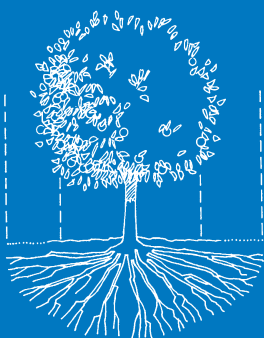
For hedges and borders: Use 1-1/2 cups for each 25 sq. ft (5' x 5') of area. Sprinkle fertilizer evenly over the soil or mulch. Mix it lightly into the soil, if possible. Be careful not to damage shallow roots.

For a single shrub or bush: Use 2/3 cup per plant for most shrubs. Use 1 cup for plants over 6 feet tall. Sprinkle Rhododendron Evergreen & Azalea Food in a ring around the bush, 6 – 12 inches from the trunk. For larger shrubs, sprinkle fertilizer at the drip line. Mix it lightly

into the soil, if possible. Be careful not to damage shallow roots.

When planting a shrub: Mix 3 tablespoons of Rhododendron Evergreen & Azalea Food into the soil at the bottom of the planting hole. Do not let the roots directly touch the plant food. Feed again in about four weeks.

Always water shrubs and hedges well after adding fertilizer.



OUR COMMITMENT TO YOUR SATISFACTION: If you are not happy with the way this product works in your garden, please let us know. We will be happy to replace the product, refund your money, or substitute another Lilly Miller product. Simply send your name, address and proof of purchase to the address shown.

Lilly Miller
Rhododendron Evergreen & Azalea
FOOD

With Natural Ingredients

Lilly Miller

Rhododendron Evergreen & Azalea FOOD

Contains Cottonseed Meal

SLOW RELEASE FEEDING FOR ALL ACID-LOVING SHRUBS & EVERGREENS

10-5-4

NET WT 4 lb (1.8 kg)

With Natural Ingredients

Lilly Miller

Rhododendron Evergreen & Azalea FOOD

GUARANTEED FERTILIZER ANALYSIS

Total Nitrogen (N)	10%
0.6% Ammoniacal Nitrogen	
5.8% Urea Nitrogen	
0.8% Water Soluble Nitrogen	
2.8% Water Insoluble Nitrogen	
Available Phosphate (P ₂ O ₅)	5%
Soluble Potash (K ₂ O)	4%
Calcium (Ca)	5%
Sulfur (S)	3%
Boron (B)	0.02%
Iron (Fe)	0.10%
Manganese (Mn)	0.05%
Molybdenum (Mo)	0.0005%
Zinc (Zn)	0.05%

Derived from Dried Poultry Waste; Cottonseed Meal; Ammonium Phosphate; Elemental Sulfur; Urea; Muriate of Potash; Calcium and Sodium Borate; Ferrons, Manganese, and Zinc Oxides; Sodium Molybdate.

ABOUT OUR SPECIAL FORMULA...

10% N Nitrogen

We use four sources of nitrogen — two for quick, lush growth, and two slow release forms for feeding that lasts up to six weeks.

5% P₂O₅ Available Phosphate

We add extra phosphorus, the key to bright, abundant flowers.

4% K₂O Soluble Potash

Potassium (potash) helps build up the plant's resistance to disease, insects and drought.

The other minerals in this premium formula improve plant color, vigor, and strength to give you the lush garden you want.

PROTECT YOURSELF, PROTECT YOUR PETS

This product contains animal manures and/or byproducts that may attract dogs or other pets. Consumption of this product may make animals sick. To minimize potential problems: 1) Store away from pets, 2) Thoroughly mix into soil to eliminate large clods or surface exposure of product, 3) Do not apply this product along with pesticides.

Please wash hands and exposed skin with soap and water after using this product.

Filled by weight not by volume. Product may settle after packaging.

LILLY MILLER BRANDS

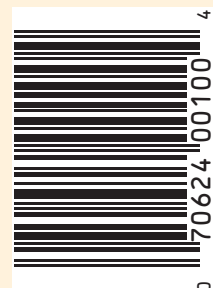
P.O. Box 2289

CLACKAMAS, OREGON 97015

www.lillymiller.com

10-5-4

Lilly Miller is a registered trademark of Central Garden & Pet.



Information regarding the contents and levels of metals in this product is available on the internet at <http://www.aapfco.org/metals.htm>

Lilly Miller
Rhododendron Evergreen & Azalea
FOOD